



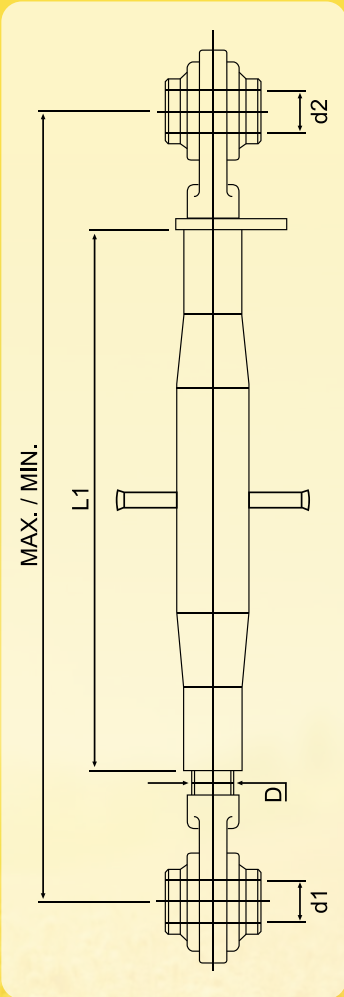
# FARM PARTS



STRIKING INTERNATIONAL

# TOP LINK ASSEMBLIES

- Top Link Assemblies (Braccio 3 Punto Completo)
- Top Link End (UNC) [Tiranti Filettati Con Rotula Sferica]
- Top Link End (MM) [Tiranti Filettati Con Rotula]
- Weld on End [Supporti Con Rotula Sferica]



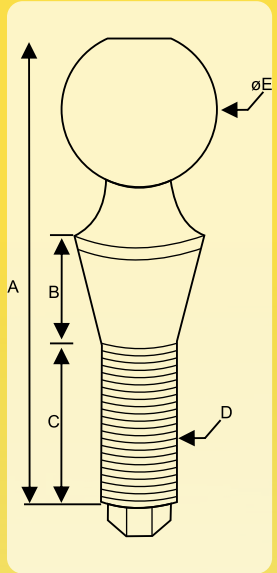
## TEHNICAL PARAMETERS

- Seamless Pipe/ERW
- Machining from Mazak Japanese CNC Machine Technology.
- Pipe Wall thickness is 3.5mm to 5.0mm and available in  $\varnothing 32$ mm to 52mm
- High Accuracy in Balls so used for Smooth Operations with Minimal Tolerance

ITEM	HEAT TREATMENT	MATERIAL
TOP LINK ASSEMBLY	AS PER CUSTOMER'S REQUIREMENT	END-EN-8 / LC PIPE - LOW CARBON STEEL

# BALLS & BUSHES

- a. Lower Link Balls [Rotula Per Braccio Inferiore]
- b. Top Link Balls [Rotula Per Gancio Superiore]
- c. Double Bore Balls [Rotula Di Ricambio]
- d. Balls with Cut [Rotula Per Braccioferiore]
- e. Guide Con Balls [Coni Guida Con Rotula]
- f. Spacers [Distanzialiper Rotule Senza Cono]
- g. Hitch Ball [Attacco A Sfera]
- h. Replacement Bushes [Bussole Di Riduzione]
- i. Tine Bushes



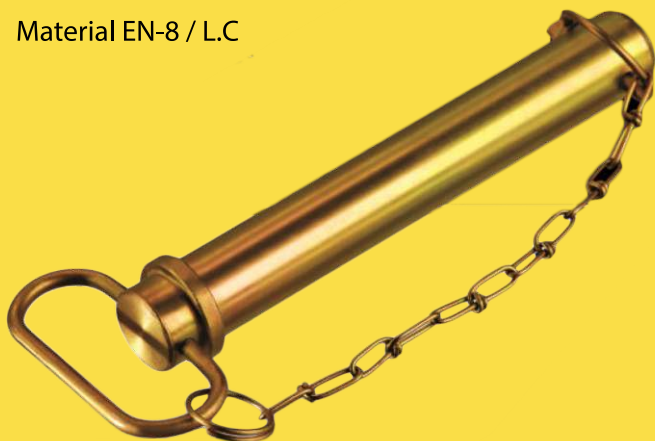
## TECHNICAL PARAMETERS

- Made by Muratec Roboting Arm CNC Automatic Loading /Unloading based technology.
- Tolerance Limits in Micron for High accuracy.
- Provides smooth operation with minimal clearance.
- Superb abrasion resistance.
- Ideally Suitable for link motion machining.
- Load Tested at 1500N.

ITEM	HEAT TREATMENT	MATERIAL
BALLS	AS PER CUSTOMER'S REQUIREMENT	LOW CARBON STEEL / EN-8/ 16Mn Cr5

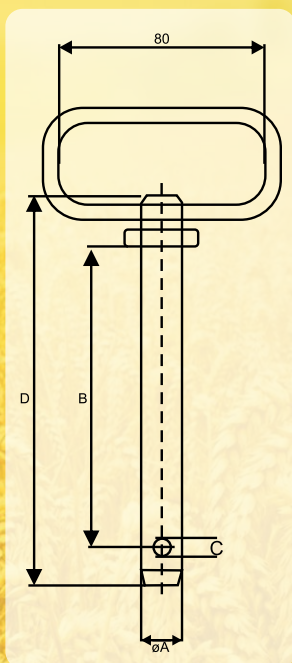
## TEHNIICAL PARAMETERS

- Made by Mazak. Japan CNC based technology.
- Tolerance upto  $\pm 0.010$  maintained .
- Material EN-8 / L.C



# pins

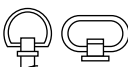
- Hitch pin with chain & Litch Pin [Spinotto D'attacco]
- Cylinder Pin [ Perno Del Cilindro]
- Top link Pin [ Perno Per 3" punto con battuta]
- Implement Pin [Perno Universale]
- Lower Link Pin [Perno Per attacco attrezzi]
- Bent Handle Hitch Pin [Perno Con Maniglia]
- Wire Lock Hitch Pin [Perno Con La serratura del legare]
- Standard Clevis Pins [ Perno Standard]
- Litch Pins/Forged [Spine a scatto]/ Forgiato
- PTO Pins [Spinottiper Motozappa]
- Hair Pin/Grip Clip/Single Spire [ Coppiglie A Mollocadmiate]



ITEM	HEAT TREATMENT	MATERIAL
PINS	AS PER CUSTOMER'S REQUIREMENT	EN-8 / L.C

\*\* HANDLE STYLE AT MANUFACTURER'S OPTION.

ROUND:



SQUARE:



## PARKING JACKS



- a. Jockey Wheel Parking Jack
- b. Parking Jack (Normal/Light type/Heavy Type)
- c. Adjustable Leveling Arm (Braccio Di Sollevamento)
- d. Leveling Assembly (Wieszak Lewy)
- e. Stabilizer Assembly (Manicotti con tenditori per catene imbrigliamento)
- f. Stabilizer Ends (Testa Tonda/ad asola)
- g. Eye Ends [Perno Ad occhio con dado per stabilizzatori]
- h. Draw Bar [Barreditraino]
- i. U Bolts

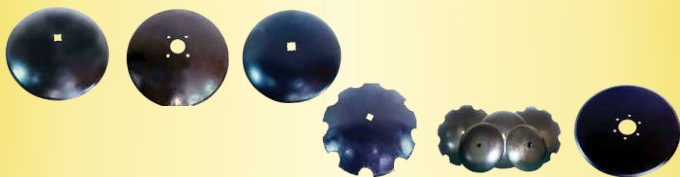
## THREE - POINTS LINKAGE SYSTEM



# HARROW DISC / DISC BLADES

## DISCHI FRANGIZOLLE

CODE	Dia. Inch	mm	Type	Thick mm	Concavity
ALG 2000137	16	410	SMOOTH	3	37
ALG 2000138	16	410	NOTCHED	3	37
ALG 2000139	18	460	SMOOTH	3	46
ALG 2000140	18	460	NOTCHED	3	46
ALG 2000141	18	460	SMOOTH	3.5	46
ALG 2000142	18	460	NOTCHED	3.5	46
ALG 2000143	20	510	SMOOTH	3.5	57
ALG 2000144	20	510	NOTCHED	3.5	57
ALG 2000145	22	560	SMOOTH	4.5	68
ALG 2000146	22	560	NOTCHED	4.5	68
ALG 2000147	22	560	SMOOTH	6	68
ALG 2000148	22	560	NOTCHED	6	68
ALG 2000149	24	610	SMOOTH	4.5	81
ALG 2000150	24	610	NOTCHED	4.5	81
ALG 2000151	24	610	SMOOTH	6	81
ALG 2000152	24	610	NOTCHED	6	81
ALG 2000153	26	660	SMOOTH	5	97
ALG 2000154	26	660	NOTCHED	5	97
ALG 2000155	26	660	SMOOTH	6	97
ALG 2000156	26	660	NOTCHED	6	97
ALG 2000157	28	712	SMOOTH	6	102
ALG 2000158	28	712	NOTCHED	6	102
ALG 2000159	28	712	SMOOTH	8	102
ALG 2000160	28	712	NOTCHED	8	102



## DISC HARROW AXLE

CODE	Dia. A	Dia. B	Dia. C	Dia. D	Thread E
ALG 2000161	7/8"	22"	1/2"	1-3/8"	7/8" UNC
ALG 2000162	7/8"	22-1/2"	1/2"	1-3/8"	7/8" UNC
ALG 2000163	7/8"	25-1/4"	1/2"	1-3/8"	7/8" UNC
ALG 2000164	7/8"	26"	1/2"	1-3/8"	7/8" UNC
ALG 2000165	7/8"	30-1/2"	1/2"	1-3/8"	7/8" UNC
ALG 2000166	7/8"	33"	1/2"	1-3/8"	7/8" UNC
ALG 2000167	7/8"	39-1/8"	1/2"	1-3/8"	7/8" UNC
ALG 2000168	7/8"	40-1/4"	1/2"	1-3/8"	7/8" UNC
ALG 2000169	7/8"	41-3/4"	1/2"	1-3/8"	7/8" UNC
ALG 2000170	1"	19"	1/2"	1-1/2"	1 - UNC
ALG 2000171	1"	26-1/2"	1/2"	1-1/2"	1 - UNC
ALG 2000172	1"	34"	1/2"	1-1/2"	1 - UNC
ALG 2000173	1-1/8"	12"	1/2"	1-5/8"	1-1/8" UNC
ALG 2000174	1-1/8"	26-1/4"	1/2"	1-5/8"	1-1/8" UNC
ALG 2000175	1-1/8"	22"	1/2"	1-5/8"	1-1/8" UNC
ALG 2000176	1-1/8"	31"	1/2"	1-5/8"	1-1/8" UNC
ALG 2000177	1-1/8"	31-1/2"	1/2"	1-5/8"	1-1/8" UNC
ALG 2000178	1-1/8"	34"	1/2"	1-5/8"	1-1/8" UNC
ALG 2000179	1-1/8"	40"	1/2"	1-5/8"	1-1/8" UNC
ALG 2000180	1-1/8"	40-1/4"	1/2"	1-5/8"	1-1/8" UNC
ALG 2000181	1-1/8"	42"	1/2"	1-5/8"	1-1/8" UNC
ALG 2000182	1-1/8"	49-1/2"	1/2"	1-5/8"	1-1/8" UNC
ALG 2000183	1-1/8"	56-1/2"	1/2"	1-5/8"	1-1/8" UNC
ALG 2000184	1-1/8"	58-1/2"	1/2"	1-5/8"	1-1/8" UNC
ALG 2000185	1-1/8"	64"	1/2"	1-5/8"	1-1/8" UNC
ALG 2000186	1-1/8"	67-1/2"	1/2"	1-5/8"	1-1/8" UNC
ALG 2000187	1-1/8"	71-1/2"	1/2"	1-5/8"	1-1/8" UNC
ALG 2000188	1-1/8"	76-1/2"	1/2"	1-5/8"	1-1/8" UNC
ALG 2000189	1-1/8"	79"	1/2"	1-5/8"	1-1/8" UNC
ALG 2000190	1-1/8"	85-1/2"	1/2"	1-5/8"	1-1/8" UNC
ALG 2000191	1-1/8"	94-1/2"	1/2"	1-5/8"	1-1/8" UNC
ALG 2000192	1-1/8"	95-11/16"	1/2"	1-5/8"	1-1/8" UNC
ALG 2000193	1-1/8"	104-11/16"	1/2"	1-5/8"	1-1/8" UNC



# HARVESTER PARTS



**ALG 3001**  
Rotary Tiller (Single Speed)

**ALG 3012**  
Spring Loaded Tiller



**ALG 3025**  
Spring Loaded Tiller (USA Model)

**ALG 3037**  
Mounted / Trailed Offset  
Disc Harrow (Compact Model)



**ALG 3051**  
Mounted M.B. Plough

**ALG 3057**  
Mounting Offset Disc Harrow  
Lubricated Taper Roller  
Bearing Hubs



**ALG 3064**  
Mounting Disc Plough

**ALG 3072**  
Tyre Ridger



## COMPANY GLIMPSE

Striking group is one of the leading manufacturer & exporter in Farm parts and automotive industry with its presence in more than 30 countries around the globe. Striking group is focused organization to increase its competitiveness in different markets. The company has full fledged infrastructure for range of tractor linkage parts, agriculture implements, trailer parts of forging to cater the increasing need of agriculture machinery industry.

Ever since our establishment, Striking International has moved itself with integrated corporate policies and entirely focusing on international trade to a position with a workforce of over 250 employees providing development of work of any application in a short span of time.

In the inspection stage quality control parameters and Eagle Eye inspection ensures that the product leaves the plant is engineered to precision. We have developed trained professional in quality control and manufacturing process to ensure the best products and efficient services before shipment. In our journey to horizons we look forward to your valued association as our business partners.

F  
A  
R  
M  
L  
I  
N  
K  
A  
G  
E  
P  
A  
R  
T  
S



## **STRIKING INTERNATIONAL**

H.O. : Shop No. 1, Guru Ram Dass Nagar, Khanna-141401 (Pb.) INDIA

B.O. : Shop No.1, Above OBC Bank, G.T. Road, Sahnewal (Pb.) INDIA

Tel : +91-161-2847321 • Fax : +91-161-2847321

Email : [striking.intl@hotmail.com](mailto:striking.intl@hotmail.com), [info@strikinginternational.com](mailto:info@strikinginternational.com)

Website : [www.strikinginternational.com](http://www.strikinginternational.com)



## COMPANY GLIMPSE

Grupo Striking la atención es uno de los principales fabricantes y exportador de piezas de granja y la industria del automóvil y su presencia en más de 30 países de todo el mundo. Grupo llamativa se centra organización para aumentar su competitividad en los diferentes mercados. La empresa cuenta con la infraestructura de pleno derecho para la gama de piezas para tractores, implementos de vinculación agricultura, piezas del acoplado de forja para satisfacer la creciente necesidad de la industria de la maquinaria agrícola.

Desde nuestro establecimiento, Striking Internacional se ha movido con las políticas corporativas integradas y totalmente centrado en el comercio internacional para una posición con una plantilla de más de 250 empleados que prestan el desarrollo del trabajo de cualquier aplicación en un corto espacio de tiempo.

En la etapa de inspección parámetros de control de calidad e inspección de Eagle Eye asegura que el producto sale de la planta se ha diseñado para la precisión. Hemos desarrollado profesional en control de calidad y proceso de fabricación para garantizar los mejores productos y servicios eficientes antes del envío entrenado. En nuestro viaje hacia horizontes miramos adelante a su asociación valorado como nuestros socios de negocios.

F  
A  
R  
M  
L  
I  
N  
K  
A  
G  
E  
P  
A  
R  
T  
S



## STRIKING INTERNATIONAL

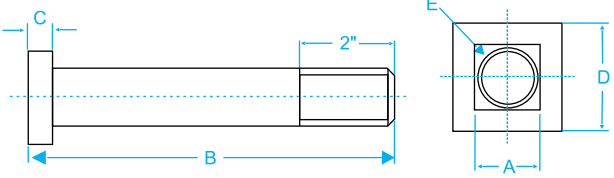
H.O. : Shop No. 1, Guru Ram Dass Nagar, Khanna-141401 (Pb.) INDIA

B.O. : Shop No.1, Above OBC Bank, G.T. Road, Sahnewal (Pb.) INDIA

Tel : +91-161-2847321 • Fax : +91-161-2847321

Email : [striking.intl@hotmail.com](mailto:striking.intl@hotmail.com), [info@strikinginternational.com](mailto:info@strikinginternational.com)

Website : [www.strikinginternational.com](http://www.strikinginternational.com)



### TOP LINK ASSEMBLIES

- Top Link Assemblies (Braccio 3 Punto Completo)
- Top Link End (UNC) [Tiranti Filettati Con Rotula Sferica]
- Top Link End (MM) [Tiranti Filettati Con Rotula]
- Weld on End [Supporti Con Rotula Sferica]

MAX. / MIN.

#### TEHNIICAL PARAMETERS

- Seamless Pipe/ERW
- Machining from Mazak Japanese CNC Machine Technology.
- Pipe Wall thickness is 3.5mm to 5.0mm and available in  $\phi 32\text{mm}$  to  $52\text{mm}$
- High Accuracy in Balls so used for Smooth Operations with Minimal Tolerance

ITEM	HEAT TREATMENT	MATERIAL
TOP LINK ASSEMBLY	AS PER CUSTOMER'S REQUIREMENT	END-EN-8 / LC PIPE - LOW CARBON STEEL

www.strikinginternational.com

### BALLS & BUSHES

- Lower Link Balls [Rotula Per Braccio Inferiore]
- Top Link Balls [Rotula Per Gancio Superiore]
- Double Bore Balls [Rotula Di Ricambio]
- Balls with Cut [Rotula Per Braccio Inferiore]
- Guide Con Balls [Coni Guida Con Rotula]
- Spacers [Distanzialiper Rotule Senza Cono]
- Hitch Ball [Attacco A Sfera]
- Replacement Bushes [Bussole Di Riduzione]
- Tine Bushes

#### TEHNIICAL PARAMETERS

- Made by Muratec Roboting Arm CNC Automatic Loading /Unloading based technology.
- Tolerance Limits in Micron for High accuracy.
- Provides smooth operation with minimal clearance.
- Superabrasion resistance.
- Ideally Suitable for link motion machining.
- Load Tested at 1500N.

ITEM	HEAT TREATMENT	MATERIAL
BALLS	AS PER CUSTOMER'S REQUIREMENT	LOW CARBON STEEL / EN-8/ 16Mn Cr5

www.strikinginternational.com

### TEHNIICAL PARAMETERS

- Made by Mazak. Japan CNC based technology.
- Tolerance upto  $\pm 0.010$  maintained.
- Material EN-8 / LC

### pins

- Hitch pin with chain & Litch Pin [Spinotto D'attacco]
- Cylinder Pin [Perno Del Cilindro]
- Top link Pin [ Perno Per 3° punto con battuta]
- Implement Pin [Perno Universale]
- Lower Link Pin [Perno Per attacco attrezzi]
- Bent Handle Hitch Pin [Perno Con Maniglia]
- Wire Lock Hitch Pin [Perno Con La serratura del legare]
- Standard Clevis Pins [ Perno Standard]
- Litch Pins/Forged [Spine a scatto]/ Forgiato
- PTO Pins [Spinottiper Motozappa]
- Hair Pin/Grip Clip/Single Spire [ Coppiglie A Mollocadmiate]

ITEM	HEAT TREATMENT	MATERIAL
PINS	AS PER CUSTOMER'S REQUIREMENT	EN-8 / LC

\*\*HANDLE STYLE AT MANUFACTURER'S OPTION. ROUND: [diagram] SQUARE: [diagram]

www.strikinginternational.com

### PARKING JACKS

- Jockey Wheel Parking Jack
- Parking Jack (Normal/Light type/Heavy Type)
- Adjustable Leveling Arm (Braccio Di Sollevamento)
- Leveling Assembly (Wieszak Lewy)
- Stabilizer Assembly (Manicotti con tenditori per catene imbrigliamento)
- Stabilizer Ends (Testa Tonda/ad asola)
- Eye Ends [Perno Ad occhio con dado per stabilizzatori]
- Draw Bar [Barreditraino]
- U Bolts

### THREE - POINTS LINKAGE SYSTEM

www.strikinginternational.com

### HARROW DISC / DISC BLADES

DISCHI FRANGIZOLLE

CODE	Dia. Inch	mm	Type	Thick mm	Concavity
ALG 2000137	16	410	SMOOTH	3	37
ALG 2000138	16	410	NOTCHED	3	37
ALG 2000139	18	460	SMOOTH	3	46
ALG 2000140	18	460	NOTCHED	3	46
ALG 2000141	18	460	SMOOTH	3.5	46
ALG 2000142	18	460	NOTCHED	3.5	46
ALG 2000143	20	510	SMOOTH	3.5	57
ALG 2000144	20	510	NOTCHED	3.5	57
ALG 2000145	22	560	SMOOTH	4.5	68
ALG 2000146	22	560	NOTCHED	4.5	68
ALG 2000147	22	560	SMOOTH	6	68
ALG 2000148	22	560	NOTCHED	6	68
ALG 2000149	24	610	SMOOTH	4.5	81
ALG 2000150	24	610	NOTCHED	4.5	81
ALG 2000151	24	610	SMOOTH	6	81
ALG 2000152	24	610	NOTCHED	6	81
ALG 2000153	26	660	SMOOTH	5	97
ALG 2000154	26	660	NOTCHED	5	97
ALG 2000155	26	660	SMOOTH	6	97
ALG 2000156	26	660	NOTCHED	6	97
ALG 2000157	28	712	SMOOTH	6	102
ALG 2000158	28	712	NOTCHED	6	102
ALG 2000159	28	712	SMOOTH	8	102
ALG 2000160	28	712	NOTCHED	8	102

### DISC HARROW AXLE

CODE	Dia. A	Dia. B	Dia. C	Dia. D	Thread E
ALG 2000161	7/8"	22"	1/2"	1-3/8"	7/8" UNC
ALG 2000162	7/8"	22-1/2"	1/2"	1-3/8"	7/8" UNC
ALG 2000163	7/8"	25-1/4"	1/2"	1-3/8"	7/8" UNC
ALG 2000164	7/8"	26"	1/2"	1-3/8"	7/8" UNC
ALG 2000165	7/8"	30-1/2"	1/2"	1-3/8"	7/8" UNC
ALG 2000166	7/8"	33"	1/2"	1-3/8"	7/8" UNC
ALG 2000167	7/8"	39-1/8"	1/2"	1-3/8"	7/8" UNC
ALG 2000168	7/8"	40-1/4"	1/2"	1-3/8"	7/8" UNC
ALG 2000169	7/8"	41-3/4"	1/2"	1-3/8"	7/8" UNC
ALG 2000170	1"	19"	1/2"	1-1/2"	1-UNC
ALG 2000171	1"	26-1/2"	1/2"	1-1/2"	1-UNC
ALG 2000172	1"	34"	1/2"	1-1/2"	1-UNC
ALG 2000173	1-1/8"	12"	1/2"	1-5/8"	1-1/8" UNC
ALG 2000174	1-1/8"	26-1/4"	1/2"	1-5/8"	1-1/8" UNC
ALG 2000175	1-1/8"	22"	1/2"	1-5/8"	1-1/8" UNC
ALG 2000176	1-1/8"	31"	1/2"	1-5/8"	1-1/8" UNC
ALG 2000177	1-1/8"	31-1/2"	1/2"	1-5/8"	1-1/8" UNC
ALG 2000178	1-1/8"	34"	1/2"	1-5/8"	1-1/8" UNC
ALG 2000179	1-1/8"	40"	1/2"	1-5/8"	1-1/8" UNC
ALG 2000180	1-1/8"	40-1/4"	1/2"	1-5/8"	1-1/8" UNC
ALG 2000181	1-1/8"	42"	1/2"	1-5/8"	1-1/8" UNC
ALG 2000182	1-1/8"	49-1/2"	1/2"	1-5/8"	1-1/8" UNC
ALG 2000183	1-1/8"	56-1/2"	1/2"	1-5/8"	1-1/8" UNC
ALG 2000184	1-1/8"	58-1/2"	1/2"	1-5/8"	1-1/8" UNC
ALG 2000185	1-1/8"	64"	1/2"	1-5/8"	1-1/8" UNC
ALG 2000186	1-1/8"	67-1/2"	1/2"	1-5/8"	1-1/8" UNC
ALG 2000187	1-1/8"	71-1/2"	1/2"	1-5/8"	1-1/8" UNC
ALG 2000188	1-1/8"	76-1/2"	1/2"	1-5/8"	1-1/8" UNC
ALG 2000189	1-1/8"	79"	1/2"	1-5/8"	1-1/8" UNC
ALG 2000190	1-1/8"	85-1/2"	1/2"	1-5/8"	1-1/8" UNC
ALG 2000191	1-1/8"	94-1/2"	1/2"	1-5/8"	1-1/8" UNC
ALG 2000192	1-1/8"	95-11/16"	1/2"	1-5/8"	1-1/8" UNC
ALG 2000193	1-1/8"	104-11/16"	1/2"	1-5/8"	1-1/8" UNC

www.strikinginternational.com

### HARVESTER PARTS

- Rotary Tiller (Single Speed)
- Spring Loaded Tiller
- Spring Loaded Tiller (USA Model)
- Mounted / Trailed Offset Disc Harrow (Compact Model)
- Mounted M.B. Plough
- Mounting Offset Disc Harrow Lubricated Taper Roller Bearing Hubs
- Mounting Disc Plough
- Tyre Ridger

www.strikinginternational.com

### COMPANY GLIMPSE

Striking group is one of the leading manufacturer & exporter in Farm parts and automotive industry with its presence in more than 30 countries around the globe. Striking group is focused organization to increase its competitiveness in different markets. The company has full fledged infrastructure for range of tractor linkage parts, agriculture implements, trailer parts of forging to cater the increasing need of agriculture machinery industry.

Ever since our establishment, Striking International has moved itself with integrated corporate policies and entirely focusing on international trade to a position with a workforce of over 250 employees providing development of work of any application in a short span of time.

In the inspection stage quality control parameters and Eagle Eye inspection ensures that the product leaves the plant is engineered to precision. We have developed trained professional in quality control and manufacturing process to ensure the best products and efficient services before shipment. In our journey to horizons we look forward to your valued association as our business partners.

Running to Lead...

**STRIKING INTERNATIONAL**  
 H.O. : Shop No. 1, Guru Ram Dass Nagar, Khanna-141401 (Pb.) INDIA  
 B.O. : Shop No.1, Above OBC Bank, G.T. Road, Sahnewal (Pb.) INDIA  
 Tel : +91-161-2847321 • Fax : +91-161-2847321  
 Email : striking.intl@hotmail.com, info@strikinginternational.com  
 Website : www.strikinginternational.com

### TRACTOR LINKAGE PARTS CATALOGUE

## FARM PARTS

**STRIKING INTERNATIONAL**

#### COMPANY GLIMPSE

Grupo Striking la atención es uno de los principales fabricantes y exportador de piezas de granja y la industria del automóvil y su presencia en más de 30 países de todo el mundo. Grupo llamativa se centra organización para aumentar su competitividad en los diferentes mercados. La empresa cuenta con la infraestructura de pleno derecho para la gama de piezas para tractores, implementos de vinculación agricultura, piezas del acoplado de forja para satisfacer la creciente necesidad de la industria de la maquinaria agrícola.

Desde nuestro establecimiento, Striking Internacional se ha movido con las políticas corporativas integradas y totalmente centrado en el comercio internacional para una posición con una plantilla de más de 250 empleados que prestan el desarrollo del trabajo de cualquier aplicación en un corto espacio de tiempo.

En la etapa de inspección parámetros de control de calidad e inspección de Eagle Eye asegura que el producto sale de la planta se ha diseñado para la precisión. Hemos desarrollado profesional en control de calidad y proceso de fabricación para garantizar los mejores productos y servicios eficientes antes del envío entrenado. En nuestro viaje hacia horizontes miramos adelante a su asociación valorado como nuestros socios de negocios.

F  
A  
R  
M  
L  
I  
N  
K  
A  
G  
E  
P  
A  
R  
T  
S



**STRIKING INTERNATIONAL**

H.O. : Shop No. 1, Guru Ram Dass Nagar, Khanna-141401 (Pb.) INDIA

B.O. : Shop No.1, Above OBC Bank, G.T. Road, Sahnewal (Pb.) INDIA

Tel : +91-161-2847321 • Fax : +91-161-2847321

Email : [striking.int@hotmail.com](mailto:striking.int@hotmail.com), [info@strikinginternational.com](mailto:info@strikinginternational.com)

Website : [www.strikinginternational.com](http://www.strikinginternational.com)